

Solid Waste Services

Newsletter



JULY 2007



Please keep this newsletter
for reference throughout the year!

On June 2, 2005, the Village Board authorized a five-year extension to the residential garbage and refuse collection and disposal contract. The contract will expire on June 30, 2010. We are in the third year of the extended contract. There are no changes to the garbage and refuse collection program, and residents have no limitation on the number of containers placed at the curb on collection day. In addition, there are no changes in the curbside recycling, yardwaste collection, or brush pick up programs.

In 2005, Allied Waste Services initiated the transition from Browning Ferris Industries (BFI). The new Allied Waste logo appears on the billing statements and continues to change on all of the collection vehicles utilized by Allied Waste Services throughout the Village.

In November 2005, Allied Waste Services initiated a cart system for garbage and refuse for all customers under the contract. This program has been very successful for both Allied

Waste Services and the Village. **Please remember that if you leave your cart outside it must be screened from view of the street.**

This regulation is no different than in the past when residents utilized 35 gallon plastic or metal containers. Please



see page 7 for additional detailed information regarding the cart program.

The rates charged for all services increased on July 1, 2007. The rates for all services will be fixed over the next three year period, and a rate schedule can be found on page 2 of this newsletter. The service rates in all categories have increased due to

increases in fuel, labor, tipping fees, transportation and final disposal costs. Our garbage and refuse is currently hauled to the DuKane transfer station in West Chicago. From there it is loaded into large semi-transfer trailers and transported to a landfill in Livingston County in Pontiac, Illinois for final disposal.

All single family homes, duplexes, triplexes and the Church Street Station, Court J, Fremont Junction, Hartford Square, Larkspur, Olde Salem, Rainbow Pointe Sacramento, Rainbow Pointe West, Savannah Subdivision, Tall Oaks and Tanglewood Homeowners Associations **are required** to have garbage and refuse collection and disposal by Allied Waste Services.

The Village and Allied Waste Services are dedicated to providing the highest quality service at the lowest possible price. If you have comments regarding the program, Allied's performance, or general service concerns, please call the Village at 630/372-4210 or Allied Waste Services at 630/469-1036.

Basic Refuse Rules

1. Do not store garbage containers or carts in the front yard. Containers can be stored in the corner side and side yard only if they are screened from public view from the street.
2. Building and landscaping materials can be stored in the front, corner side, or side yards only if a building permit has been issued.
3. Do not put garbage, refuse, recyclables, or yardwaste out for collection earlier than 5:00 PM preceding your pick up day.
4. Please remove your containers or anything not collected by Allied Waste Services within 24 hours after your pick up day.
5. Load your recycling bin properly so newspaper does not blow out all over the neighborhood on windy days.
6. Do not locate compost piles in front or corner side yards and maintain the compost pile to control odors.

Thank you in advance for following these regulations and maintaining clean neighborhoods.

Monthly Refuse Collection and Special Service Rates

Rate Per Dwelling Unit Per Month

	TYPE OF BILL	Rate Per Dwelling Unit Per Month		
		7/1/07 TO 6/30/08	7/1/08 TO 6/30/09	7/1/09 TO 6/30/10
SINGLE FAMILY, DUPLEX, TRIPLEX	INDIVIDUAL	\$16.74	\$17.25	\$17.76
CHURCH STREET STATION	INDIVIDUAL	\$15.86	\$16.34	\$16.83
COURT J HOMEOWNERS ASSOC.	INDIVIDUAL	\$15.86	\$16.34	\$16.83
FREMONT JUNCTION	ONE INVOICE	\$14.69	\$15.14	\$15.59
HARTFORD SQUARE	INDIVIDUAL	\$15.86	\$16.34	\$16.83
LARKSPUR	ONE INVOICE	\$14.69	\$15.14	\$15.59
OLDE SALEM	ONE INVOICE	\$14.48	\$14.92	\$15.36
RAINBOW POINTE SACRAMENTO	INDIVIDUAL	\$15.86	\$16.34	\$16.83
RAINBOW POINTE WEST	INDIVIDUAL	\$15.86	\$16.34	\$16.83
SAVANNAH SUBDIVISION	INDIVIDUAL	\$15.86	\$16.34	\$16.83
TALL OAKS OF HANOVER	INDIVIDUAL	\$15.86	\$16.34	\$16.83
TANGLEWOOD	ONE INVOICE	\$14.48	\$14.92	\$15.36
YARDWASTE CART SERVICE (96-GALLON)		\$18.97	\$19.54	\$20.13
YARDWASTE STICKER		\$1.94	\$2.00	\$2.06
SPECIAL PICK UP (PER YARD)		\$11.92	\$12.28	\$12.65
APPLIANCE PICK UP (WHITE GOODS)		\$17.37	\$17.89	\$18.43
ADDITIONAL REFUSE CART (64 GALLON)		\$2.10	\$2.10	\$2.10
ADDITIONAL REFUSE CART (96 GALLON)		\$2.30	\$2.30	\$2.30

Appliance Pick Up and Tire Disposal Information

A special pick up charge applies for the collection of the following appliances:

- AIR CONDITIONERS—CENTRAL UNIT
- AIR CONDITIONERS—WINDOW UNIT
- BOILERS
- CHILLERS
- CLOTHES DRYERS
- CLOTHES WASHERS
- DEHUMIDIFIERS
- DISHWASHERS
- FREEZERS
- FURNACES

- HEAT PUMPS
- HUMIDIFIERS
- OVENS
- RANGES
- REFRIGERATORS
- STOVES
- WATER COOLERS
- WATER HEATERS

The following appliances can be disposed of with regular garbage collection at no extra charge:

- BUSINESS OR OFFICE EQUIPMENT
- COMPUTERS

- GARBAGE DISPOSALS
- HAND-HELD APPLIANCES
- MICROWAVE OVENS
- TELEVISIONS AND VCRs
- TRASH COMPACTORS
- WATER SOFTENERS

See "Appliance Pick Up Rate" above for fee per appliance. Arrangements must be made in advance for the collection of appliances and tires. There is no charge for tire disposal; however, if you have more than two tires for disposal, call Allied Waste Services at 630-469-1036 to set up a special pick up.

Household Refuse Pick Up Information

Billing Procedures

Except for certain instances in which the bill for refuse pick up for all the homes in one area is sent to the Homeowners Association, refuse bills are mailed to Hanover Park residents on a quarterly basis.

The bills are due 30 days after receipt for advance services. This billing policy helps keep rates as low as possible.

Move-ins and Move-Outs

Please notify the Allied Waste Services office if you are moving out of your home or if you have recently moved into a home in Hanover Park so that billing records can be kept accurate and up-to-date.

Cart Service

Allied Waste Services' optional cart service provides you with an attractive, well-designed 64- or 96-gallon container that replaces as many as four 20-gallon cans. These sturdy carts are easy to use, resistant to animals, and make your neighborhood cleaner and more attractive on pick up days.

Residents can also rent carts in addition to the one provided. The rental rate is \$2.10 per month for a 64-gallon cart and \$2.30 per month for a 96-gallon cart.

Carts are also available for yardwaste. The fee is \$18.97, and you do not need to purchase yardwaste stickers if you use an Allied Waste Services cart for yardwaste.

Frequency of Service

All single-family homes, duplexes, and triplexes receive one pick up per week on Fridays.

Church Street Station, Court J, Fremont Junction, Rainbow Pointe Sacramento, Rainbow Pointe West, the Savannah Subdivision, and Tall Oaks receive one pick up per week from September 1 through May 31 on Fridays and two pick ups per week in June, July and August on Tuesdays and Fridays.

Hartford Square, Larkspur, Olde Salem and Tanglewood receive two pick ups per week year-round on Tuesdays and Fridays.

Set-out Time

All garbage, refuse, recyclables, and yardwaste must be at the curb by 7:00 AM on your scheduled pick up day.

Garbage, refuse, recyclables, and yardwaste MAY NOT be set out any earlier than 5:00 PM on the day preceding a pick up.

All garbage, refuse or recycling containers and any garbage, refuse, construction debris, landscape waste, white goods, or other material left at the curb line or parkway area after collection by Allied Waste Services must be removed within 24 hours.

Pick Up Rules

Items that will **not be picked up**:

- Any garbage, refuse, or landscape

waste container exceeding 70 pounds.

- More than one container of construction debris or remodeling items such as bathtubs, counter tops, paneling, lumber, brick, gutters, aluminum siding, garage doors, carpeting, concrete, large automobile parts, swimming pools, drywall, large logs, and tree stumps in excess of six inches in diameter or 70 lbs.

These items will be taken on a special pick up basis; scheduled in advance. Special pick ups are C.O.D. only, unless other arrangements have been made. Call Allied Waste Services at 630-469-1036 to arrange a special pick up.

Items that **will be picked up**:

- Household garbage and refuse in carts or in plastic or metal cans no greater than 35-gallon capacity or plastic bags at the curb.
- Furniture.
- A maximum of one container of sod, rock, construction debris, drywall, etc., in a container or bundled and weighing no more than 70 lbs.

Termination of Service

Refuse pick up service will be terminated at a residence where the bill is 30 days past due. **No late notices are sent.** The addresses of those customers are submitted to the Village for further action. Putting trash at a neighbor's home or disposing of your trash at a location other than your curb on the designated service day is **not permitted**.

Holiday Service Schedule

Pick up will be delayed by one day when a holiday falls between Sunday -- Friday

Date	Holiday	Refuse Pick Up
Wednesday 7/4/07	Independence Day	Saturday 7/7/07
Monday 9/3/07	Labor Day	Saturday 9/8/07
Thursday 11/22/07	Thanksgiving	Saturday 11/24/07
Tuesday 12/25/07	Christmas	Saturday 12/29/07
Tuesday 1/1/08	New Year's Day	Saturday 1/5/08
Monday 5/26/08	Memorial Day	Saturday 5/31/08
Friday 7/4/08	Independence Day	Saturday 7/5/08

For service questions or concerns, call **ALLIED WASTE SERVICES** at **630-469-1036**

Village Brush Pickup Program

The Brush Pick Up Program provides FREE curbside pick up and chipping of branches, which are then reused as mulch. Last year, the program produced 2,205 cubic yards of mulch which was made available free to Village residents for use around shrubs and flower beds. Brush will be picked up in April, July, and October.

What will be picked up:

Branches with a minimum of two (2) feet in length and a maximum of ten (10) feet in length and less than eight (8) inches in diameter.

What will not be picked up:

- ✂ Small hedge or pine clippings.
- ✂ Yardwaste or brush in containers.
- ✂ Brush or branches with thorns.
- ✂ Stumps or tree roots.

How to stack the brush:

- ✂ Neatly stack the brush in one direction with the butt end toward the street.
- ✂ No lumber, wire, rope, or other material may be included with the brush.
- ✂ Do not block the sidewalk when putting brush out!

Set-out Time

Brush can only be set out two days prior to 7:00 AM on your pick up day. Please cut out the schedule to refer to later in the year.

Please do not put brush out after 7:00 AM on the first day of the collection cycle.

Hold it for the next scheduled pick up.

The Village incurs considerable cost returning to an area to collect brush set out after the first day of the collection cycle. If you have problems or questions regarding the Village Brush Pick Up Program, call 630-372-4440.

Another Option for Brush Pick Up:

If you miss your scheduled Village pick up, or if you do not wish to hold your brush until your next scheduled Village brush pick up day, you may put brush and branches out for pick up by Allied Waste Services on Fridays from April through November 2007.

What Allied Waste Services will pick up:

- ✂ Bundles up to 48 inches long and up to 18 inches in diameter.
- ✂ Individual branches that do not exceed 3 1/2 inches in diameter.
- ✂ Brush that is tied with natural fiber twine.
- ✂ Bundles with a yardwaste sticker attached — this is a MUST!

Allied Waste Services Set-out Time

No later than 7:00 AM on your regular Friday collection day.

Remember—the **final yardwaste and brush collection day from Allied Waste Services is Friday, November 30, 2007. Yardwaste collection resumes on April 4, 2008.**

Free Wood Chips Available

Residents can call the Village for free wood chips. The wood chips are a by-product of the Village's Brush Pick Up Program and vary in size and composition.

Leaves, evergreen needles, and wood

chips of varying sizes will likely be a part of every load, so we ask that you take a look at the wood



chips at the rear of the Public Works facility before placing your order.

Each load of wood chips will average about four cubic feet. That is enough to fill an area six feet by six feet by three feet high.

The Public Works Department will deliver the wood chips and dump them in the driveway ONLY—not on driveway aprons, sidewalks or lawns.

Call the Public Works Department at 630-372-4440 for further information and to request a delivery.

Village Brush Pick Up Schedule

Area 1: Streets north of Lake Street and west of Barrington Road

July 9, 2007 October 1, 2007 April 7, 2008 July 7, 2008

Area 2: Streets north of Lake Street and east of Barrington Road

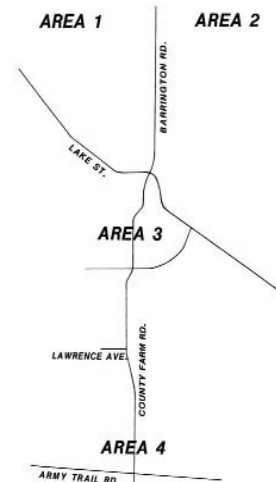
July 16, 2007 October 8, 2007 April 14, 2008 July 14, 2008

Area 3: Streets south of Lake Street and north of Lawrence Avenue

July 23, 2007 October 15, 2007 April 21, 2008 July 21, 2008

Area 4: Streets south of Lawrence Avenue

July 30, 2007 October 22, 2007 April 28, 2008 July 28, 2008



Curbside Yardwaste Pick Up Information

Yardwaste has been banned from Illinois landfills since July 1990 and is picked up at the curb once a week by Allied Waste Services and transported to an IEPA-approved composting site.

A "user pay" system for yardwaste has been in effect since the July 1990 landscape waste ban. Each resident pays his proportionate share of this additional cost through the purchase of special yardwaste stickers that are required for the yardwaste to be collected.

Even though curbside pick up and composting of yardwaste is an added cost, it is ecologically wise for yardwaste to be kept out of the landfills in order to conserve the quickly-disappearing landfill space.

Where to buy yardwaste stickers:

Hanover Park Village Hall
2121 West Lake Street
630-372-4200

Allied Waste Services
630-469-1036

Village Vendors:

Caputo's New Farm Produce
1250 Lake Street
630-372-2800

Dino's Finer Foods
6774 Barrington Road
630-837-1000

First Eagle Bank
1040 Lake Street
630-893-3800

True Value Hardware
1559 Irving Park Road
630-830-6664

Ultra Foods
7580 Barrington Road
630-213-9900

Other Vendors:

Ace Hardware
806 Army Trail Road
Carol Stream
630-213-3400

Dominick's
1445 Gary
Bloomington
630-351-8951

Family Foods
998 Army Trail Road
Carol Stream
630-372-2790

Jewel Food Store
750 Army Trail Road
Carol Stream
630-289-3700

Jewel Food Store
2501 Schaumburg Rd.
Schaumburg
847-524-8960

Meijers
130 S. Gary
Bloomington
630-351-7621

Preparing yardwaste for pick up:

Grass and small shrubbery clippings, leaves, hedge trimmings and garden waste may be put out for pick up.

Place yardwaste in a 35-gallon brown paper yardwaste bag available from your local grocery stores and other merchants, or place it in a 35-gallon or less metal or rigid plastic container.

A yardwaste disposal sticker must be affixed to **each** brown yardwaste bag, plastic or metal container left at the curb. The stickers will be removed from the containers by Allied Waste Services employees as the containers are emptied.

Place the containers so the sticker faces the curb.

Containers without stickers will not be emptied.

You may also contact Allied Waste Services to obtain a yardwaste container decal to further distinguish your yardwaste container from your other refuse containers.

Containers must be at the curb no later than 7:00 AM on pick up day and no earlier than 5:00 PM on the afternoon preceding the pick up day.

Plastic bags or containers other than those specified above are not acceptable

and will not be picked up because they jam the composting equipment and do not decompose in compost piles.

Leaf pick up regulations:

The same rules for leaving grass clippings at the curb apply to leaving leaves at the curb. Look for additional leaf pick up details in the September / October issue of the *Hi-Lighter*.



Leaves must be in a 35-gallon brown yardwaste bag, a 35-gallon metal container, or a 35-gallon rigid plastic container; and a yardwaste disposal sticker **must** be attached to **each** bag or container.

Curbside yardwaste collection will be provided by Allied Waste Services once a week on Fridays through November 30, 2007. Yardwaste collection will resume on April 4, 2008.

Illegal Dumping Could Cost You

With separate refuse disposal rates and yardwaste disposal fees, some people are tempted to lower their costs by dumping grass clippings or leaves into a vacant lot, along a creek bank, into a drainage swale, or in a commercial dumpster. We have one word of advice about illegal dumping:

Don't!

We must work together to save our dwindling landfill space and to find ecologically-sound ways to recycle and reuse as much as possible.

Illegal dumping is environmentally detrimental, as well as being unfair to those doing their fair share to recycle yardwaste. In the interest of the environment and out of fairness to all, those dumping illegally will be prosecuted.



Curbside Recycling Program

The curbside recycling program includes the collection of the following items:

Current material collected:

- All #1 PETE, #2 HDPE, #3 PVC, #4 LDPE, #5 PP, and #7 OTHER plastic containers
- Plastic grocery bags
- Six and 12 pack beverage rings
- Glass bottles and jars
- Aluminum cans
- Formed aluminum containers
- Clean aluminum foil
- Tin/steel/bimetal cans
- Formed steel containers
- Empty aerosol cans
- Empty paint cans
- Newspapers, magazines, catalogs, phone books and office paper
- Junk mail, paperboard and envelopes
- Juice boxes, milk cartons, and frozen food paper packages
- Corrugated cardboard
- Brown paper grocery bags

Materials that are NOT recycled:

- #6 PS plastic containers
- Plastic caps and lids
- Plastic containers larger than two gallons
- Plastic film
- Plastic paint buckets
- Polystyrene packing peanuts and blocks
- Bread bags
- Shrink wrap
- Horseshoes and other scrap metal
- Gasoline cans
- Chemical cans
- Pesticide cans
- Engine blocks
- Wire or other metal
- Pots and pans
- Radiators
- Window glass
- Ovenware
- Mirrors
- Crystal
- Ceramics
- Motor oil
- Paint thinner

Loading Your Recycling Bin

Allied Waste Services is using a single stream collection process and all recyclable materials are collected in a single compartment. The materials are then sorted at the recycling facility.

This process eliminates the need to sort your recyclable materials.

Bundle all other paper products together with string or twine or place in a brown paper grocery bag. Cardboard and paperboard must be flattened and no larger than 3' x 3'. All papers must be free of food debris and grease. Do not place mixed paper in plastic bags. Throw out paper with waxed surfaces.

Plastic grocery bags can be bundled together with one plastic grocery bag. Six- and twelve-pack beverage rings can be tied together with one carrier. Snipping the rings is discouraged.

Pick Up of Recyclables

Place the bin at the curb alongside your garbage no later than 7:00 AM on the morning of your regular garbage collection day, or after 5:00 PM the afternoon preceding your recycling day. Multifamily areas receive only one recycling pick up per week on Fridays.

Please be advised...

There are no markets available for the recycling and reuse of #6 PS, Polystyrene plastic containers. Examples of the #6 PS containers include egg containers and meat trays, which are available at local food and grocery stores.

If you place the #6 PS containers in your recycling bin, Allied Waste Services will collect it, however, these materials cannot be recycled and are thrown out with garbage and refuse.

We ask that you dispose of the #6 PS Polystyrene plastic foam containers with your regular garbage and refuse until further notice.

About the Recycling Bins

Please remember the smaller 14-gallon recycling bin is the property of the Village of Hanover Park and is not to be removed from a resident's property, unless you have purchased an additional bin. If a resident moves, the bin is to be left at the house for the new owners.



If anyone other than a representative from Allied Waste Services is seen removing materials from the recycling bin, please contact the Police Department at 9-1-1. An additional 18-gallon bin can be purchased at Village Hall for \$5.00. The 18-gallon bins are also available from Allied Waste Services at a cost of \$5.00 per bin with an additional \$5.00 delivery charge. Call 630/469-1036 to arrange a delivery.

If you do not wish to purchase an additional bin, you may use a brown paper grocery bag to store additional recycling materials. Whenever possible, please use the brown bag to hold paper materials. The brown bag can be placed on top of or next to the recycling bin on collection day.

Recycling Reminders

Remember to rinse plastic containers, cans, and bottles before putting them at the curb. There is no need to remove paper labels.

Remove your bin from the curb as soon as possible after it is emptied to keep it from blowing down the block or into the street.

Use a black marker to put your address on your bin so it can be returned to you, or you may wish to write your address on a piece of white adhesive tape and attach it to your bin.

Loading your bin properly, with newspapers on the bottom and other recyclables on top, will keep the papers from blowing out on windy days.

Throw out plastic tops and remove plastic liners from newspapers. Do not use plastic bags to hold other recyclable items.

Recycling Guide

DuPage County offers a comprehensive Recycling Guide. This resource guide lists a variety of options and programs available to help residents manage hazardous and other types of solid wastes in an environmentally sound manner.

The publication is available for viewing or printing at www.DuPageCo.org/edp/ or you can call DuPage County Solid Waste Department at 630-407-6700.



Refuse Cart Program

The cart system improved the quality of our collection service by:

- ▣ Keeping papers, odors, refuse, etc. in the cart and the elements and animals out.
- ▣ Improving our community's appearance.
- ▣ Providing an easy to handle container to store and move garbage and refuse.
- ▣ Decreasing injury to the refuse collectors.



Cart Placement

Since a mechanical arm on the truck performs the collection of the carts, it is important to properly place your cart at the curb. Your cart will need to be placed at the curb approximately one (1) foot behind the curb, or in cases where curbs are non-existent approximately one (1) foot off of the pavement with the wheels facing away from the street (toward your house). Please place the cart so that vehicles parked on the street do not obstruct it, or next to mailboxes, utility poles, or fire hydrants.

Loading Your Roll-Out Cart

To place garbage in your cart, always lift the lid from the front. Be careful to not overload your cart in excess of your ability to safely maneuver it.

Moving Your Roll-Out Cart to the Curb for Collection

Make sure the lid is closed. Then grab the handle and use the convenient "tilt and go" design feature (between the wheels at the rear of the cart), and tilt the cart back slightly. Now you can safely and easily push or pull the cart. The cart is designed to withstand dragging; however, for ease of use, tilt and roll! **Don't forget always close the lid before moving and on inclines. Pull the cart uphill; push cart downhill.**

Always Close the Lid

Always keep the lid closed. This will keep animals, rain, snow and ice out, refuse and odors in the cart.

Remove Your Cart After Collection

Do not leave your cart at the curb/street. To help maintain the appearance of the neighborhood, remove your cart as soon after collection as possible. Your cart is designed to be stored in your garage or other convenient location next to your home. **Carts left outside must be screened from view of the street.** Take care to not store your cart close to a furnace, fireplace, grill or other source of heat. In order to keep track of your cart, you may want to write your address in permanent marker on the side of the cart.

Caring For Your Cart

Your cart is designed for ease of maintenance. To clean, simply rinse your cart with water from time to time. Let dry in sunlight with the lid open.

Do not place paints, solvents, acids, gasoline, oil, hot ashes, medical wastes, exposed needles, sand, soil, rocks or concrete in your cart.

Additional Carts

If you need an additional cart for garbage and refuse, contact Allied Waste Services. An additional monthly fee of \$2.10 for a 64-gallon cart or \$2.30 for a 96-gallon cart will be charged by Allied Waste Services.

Program Highlights

- ▣ Carts are to be used for solid waste only.
- ▣ Cart ownership and maintenance responsibility remains with Allied Waste Services.
- ▣ You should fill your cart only up to the point that allows the lid to be fully closed.
- ▣ At no time are you restricted to the capacity of the cart for weekly collection.
- ▣ If a need arises to place additional solid waste at the curb, the additional waste may be placed next to the cart for collection in standard cans. Or in the case of odd shaped items, those as well may be placed next to the cart.

Household Hazardous Waste Information

A growing problem in many households is the disposal of household hazardous waste. The IEPA defines hazardous waste as corrosive, reactive, toxic, or ignitable.

Household products used in the bathroom, kitchen, garage, workshop, lawns and gardens, contain chemicals that contribute to the contamination of water supplies and natural resources when discarded.

Examples of household hazardous wastes include: **paint, turpentine, wood preservatives, stains, pesticides, herbicides, ant killers, drain cleaners, rug cleaners, toilet cleaners, household batteries, oven cleaners, pool chemicals, ammonia-based cleaners, and automotive products such as antifreeze, transmission fluid, brake fluid, used oil, and batteries.**

Consumers are responsible for the safe environmental management and disposal of household hazardous wastes. The best solution for the disposal of these products is to avoid disposal by the frugal use and purchases of these materials. Fully use these products so that no waste remains except residuals attached to the container. Also read disposal instructions on the container.

A second option would be to recycle the waste. The following Hanover Park business will accept motor oil:

Jiffy Lube
1600 Irving Park Rd.
630-289-7744

Jiffy Lube will accept five gallons of oil per visit at no charge. The manager of Jiffy Lube requests the oil be dropped off during regular business hours, placed in a sealed container (that is, the original container, or a capped milk or water jug), and not mixed with any other fluid.

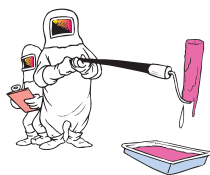
The following Hanover Park business will accept automotive batteries:

Northern Frame and Auto
2331 Walnut Avenue
630-830-8555

Residents can drop off old batteries at no charge during regular business hours.

Household Hazardous Waste Information

A third option for the management of household hazardous waste is storing the chemicals in a safe place in the home until a hazardous waste collection is offered in the community.



The waste should be stored in the original container in a cool, dry place. The IEPA conducts hazardous waste collection days throughout the state in the spring and fall. For locations, contact:

Illinois Environmental
Protection Agency
217-785-8604

www.epa.state.il.us

or

DuPage County
HHW Hotline
630-510-2810

<http://ec.dupageco.org/solidwaste>

The State of Illinois also operates the Hazardous Waste and Information Center which provides information on the proper disposal and use of hazardous products. For additional information, contact:

The Illinois Waste Management
Research Center
One East Hazelwood Drive
Champaign, IL 61820
217-333-8940

Solid Waste Services

Newsletter

This newsletter is published yearly by the Village of Hanover Park and Allied Waste Services. If you have questions or concerns regarding any information in this newsletter, contact Mark Masciola at 630-372-4210 or Allied Waste Services at 630-469-1036.

Village Hall 630-372-4200
Police Info. 630-372-4400
Fire Dept. Info. 630-736-6800
Public Works Info. 630-372-4440

Village Info Hotline
630-372-4290

TDD 630-372-4430
Village Hall Fax 630-372-4215
Police Dept Fax 630-372-4420

Police, Fire, Ambulance 9-1-1

www.HanoverParkIllinois.org
This newsletter is printed
on recycled paper.

DuPage County's **FREE** Household Hazardous Waste Collection Events

Acceptable Wastes

Thermostats
Eyeglasses
Cleaning solvents
Acids
Propane Cylinders
Fertilizers/Pesticides
Poisons
Household Batteries
Automotive Fluids
Asbestos

Acceptable Wastes

Mercury Gauges
Paint Thinners
Mercury Thermometers
Smoke Detectors
Oil-based paints
Car Batteries
Wood Stain & Varnish
Pool Chemicals
Fluorescent Light Bulbs
Old Gasoline
Compressed Gas

Unacceptable Wastes

Latex Paint
Fireworks
Business Waste
Children's Light-up Sneakers
Agriculture Waste
Ammunition
Explosives
Medical Waste
Lead Acid Batteries
Radioactive Waste

Cellular phone, batteries and charger sets will also be accepted for DuPage County's Cellular Phone Collection Program.

Household Hazardous Waste Collection Events

Further information and schedule can be found on the IEPA or DuPage County web sites: epa.state.il.us or dupageco.org/edp/. If you have questions, please call (630)682-7373 or call the HHW Hotline at 630/510-2810.

Permanent Household Hazardous Waste Facility

Residents throughout DuPage County can drop off household hazardous waste (HHW) at the permanent collection site operated by the City of Naperville. The facility is located at Naperville Fire Station No. 4, 1971 Brookdale Road (3/4 of a mile south of I-88, on the east side of Route 59). The Naperville facility is open on Saturdays and Sundays from 9:00 AM to 3:00 PM, except on holidays. For additional recorded information call: 630/420-6142 or visit their web site www.naperville.il.us

Recycling and Disposing of Waste Paint

DuPage County and the Illinois Environmental Protection Agency (IEPA) conduct a program with local paint retailers willing to accept waste paint for recycling. Participating stores accept paint from residents, remix it, and sell the recycled paint. If you have paint you need to get rid of, or if you would like to purchase recycled paint, contact the following store for information about locations, hours and fees (where applicable):

DuPage County Public Works
7900 S. Route 53, Woodridge
(630)985-7400

PRSR STD
ECRWSS
U.S. POSTAGE
PAID
HANOVER PARK,
IL
PERMIT NO. 353

ECRWSS
Postal Patron Local
Hanover Park, IL 60133